

# Technical data sheet

## VISIO 3:1 ST

200

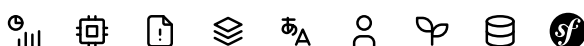


### OPTIONS

Support frame	
Black, 6mm	✓
Stainless steel, 6mm	✓
Window frame	
Black	✓
Stainless steel	✓
Handles	
Oak wood handle dark stained	✓
Stainless steel	✓
Steel black	✓
AIR-System	
for room air independent installation	✓



200



# Technical data sheet

## VISIO 3:1 ST



### PRODUCT INFORMATION

Weight depending on model/equipment	
Weight depending on model/equipment	510 kg
Ø Smoke outlet	
Ø Smoke outlet	200 mm
Ø Air inlet	
Ø Air inlet	150 mm
Certifications	
Energy efficiency class	A
Eco-Design	✓
EN NC 6.4.23	EN 13229
BlmSchV	Stufe 2
Flamme Verte	✓
Classe energetica di appartenenza	4 Stelle



# Technical data sheet

## VISIO 3:1 ST



### SERVICES

Thermal output	
Nominal heat output	10 kW
Thermal output range min./max.	8.7-10 kW
Fuelwood requirement	2.9 ≈ kg/h
Energy efficiency	80 %
Triple values	
Exhaust gas mass flow	9.6 g/s
Exhaust temperature	238 °C
Required delivery pressure	12 Pa
Required delivery pressure at 0.8 times the nominal heat output	10 Pa
Fire safety	
Dust at 13 % O <sub>2</sub>	18 mg/Nm <sup>3</sup>
CO emission at 13 % O <sub>2</sub>	0.0744 %
CO emission at 13 % O <sub>2</sub>	930 mg/Nm <sup>3</sup>
CO <sub>2</sub> concentration	8.8 %
OGC at 13 % O <sub>2</sub>	35 mg/Nm <sup>3</sup>
NO <sub>x</sub> at 13 % O <sub>2</sub>	87 mg/Nm <sup>3</sup>

### INSTALLATION

Furniture distance from the front glass	
A: Furniture distance from the front glass	700 mm
Furniture distance from the side glass	
B: Furniture distance from the side glass	700 mm

All information is provided without guarantee. Sketches are not true to scale.

23.04.2026 | 3 / 4



# Technical data sheet

## VISIO 3:1 ST

200

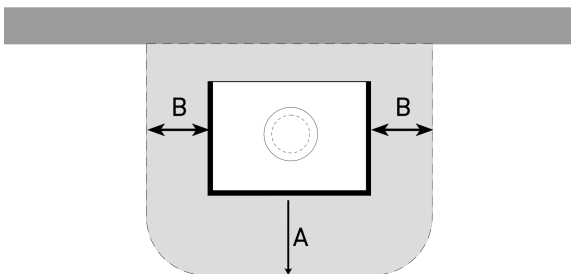


### Note

Maximum weight supported by the frame: 200 kg.

Please observe the national/regional regulations for floor protection.

### Sketches of safety distances



200

